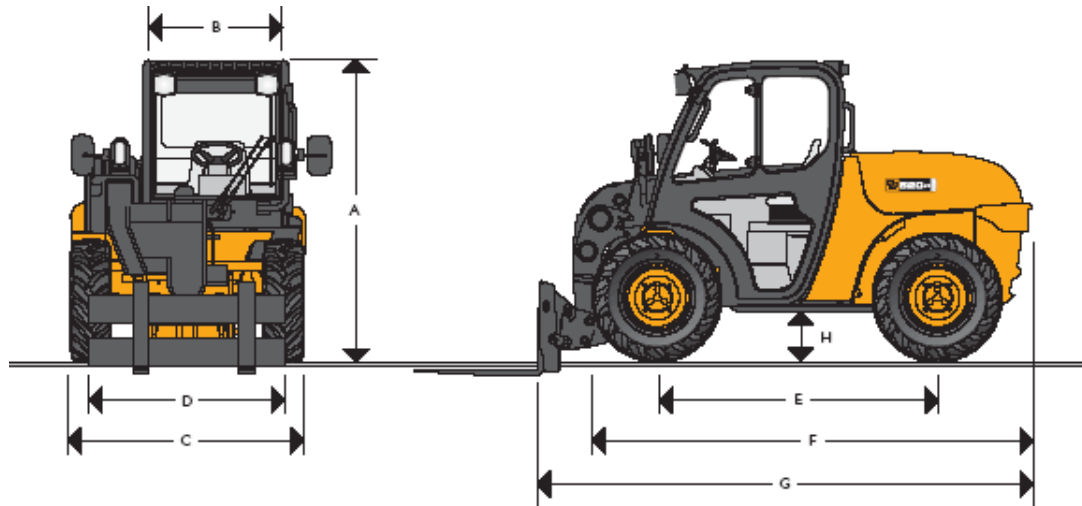
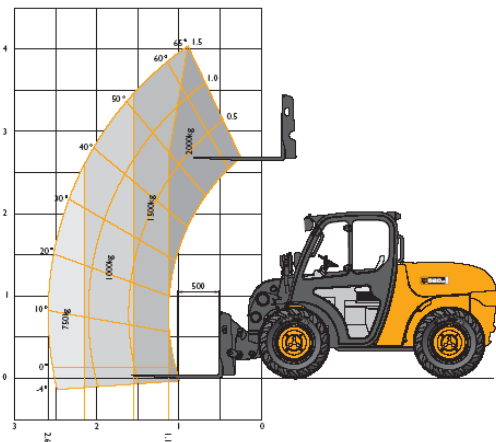


# JCB 520-40 TELEHANDLER



STATIC DIMENSIONS							
		m	ft-in			m	ft-in
A	Overall height	1.97	6'5"	G	Overall length to front of carriage	3.38	11'1"
B	Inside width of cab	0.92	3'0"	H	Ground clearance	0.27	0'11"
C	Width over tyres (min)	1.56	5'1"		Outer turn radius over tyres (min)	3.05	10'0"
D	Front Track	1.29	4'2"		Weight	4400kg	9700lb
E	Wheel base	1.90	6'3"		Tyres	10x16.5	12ply
F	Overall length to front of tyres	2.92	9'6"			12x16.5	10ply



LOADER PERFORMANCE	
Shovel rated capacity	0.6m <sup>3</sup>
Breakout force	36kN 3700kg
Dump height	3555mm
Dump angle at max. height	33 degrees
Loadover height (max)	4015mm
Rollback angle at ground	38 degrees
Carriage rotation angle (total)	140 degrees
Bucket width	1830mm

## KEY FEATURES

This is the most compact machine in the JCB Loadall range. It can operate in buildings previously inaccessible to four-wheel steer handlers, while still maintaining a 4m lift height thanks to its telescopic capability.

- ◆ Permanent 4-wheel drive and equal size wheels provide traction and flotation in all ground conditions.
- ◆ Low off-set boom, large roof window and glassed area provide exceptional all-round visibility.
- ◆ Two-range hydrostatic transmission enables precise operation for rehandling and loading within confined spaces.
- ◆ Spacious cab offers ergonomic layout of controls.
- ◆ 2000kg maximum lift capacity to a full height of 4 metres.
- ◆ Machine travel direction is mounted on the right-hand joystick, allowing full control of steering with the left hand at all times.